

ORR1000 Status Monitoring Disk

1. D:/MIBS folder:

This folder contains the MIB files to be imported into your SNMP v2c compatible monitoring software. The SNMP-FRAMEWORK-MIB.dat is optional, as many SNMP v3 managers already include it.

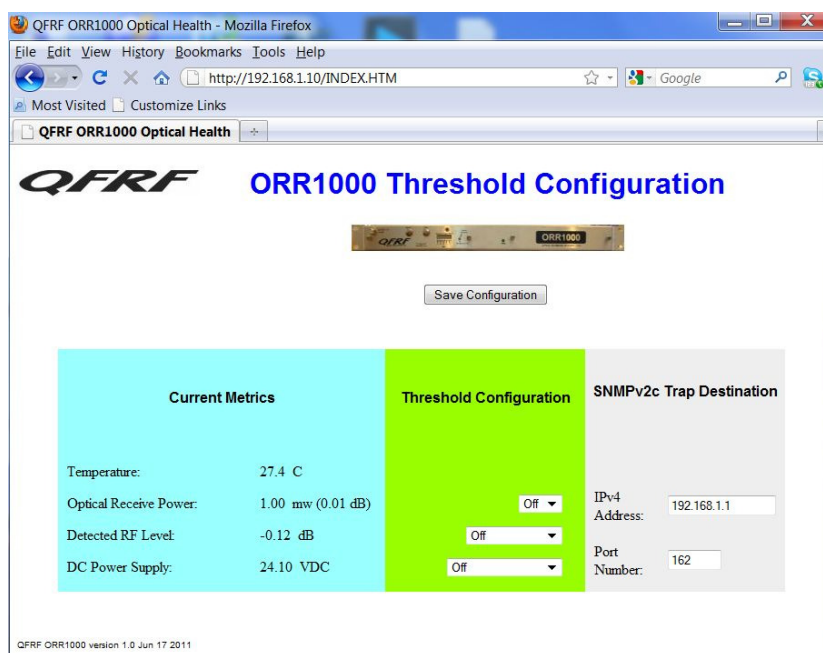
2. D:/PCTOOLS folder:

a. IPSetup.exe - This utility is useful for several things. It will help you find a particular NETBURNER card that is installed in the QFRF ORR1000 optical receivers on your network, as well as assign a static IP, Network Mask, Gateway, or DNS address to the monitoring card. When you click on "Search Again", the program will find all NETBURNER cards on your network, display their MAC address, what software they are running, and what IP address they have been assign via DHCP. If you click on "Launch Webpage", the program will launch your browser and point to the IP address of the highlighted unit.

b. AutoUpdate.exe - This utility will find NETBURNER cards on your network, and allow you to download newer versions of software to them across your network. It is also useful during installation/setup to see the IP address that has been assigned to the unit via DHCP.

c. QFRF_Optical_Health_APP.s19 - This is the latest version of the QFRF monitoring software, in case it should ever become necessary to download a fresh copy to a unit.

3. Monitor Operation: After powering up the ORR1000 unit and setting the output RF levels, it is necessary to set the reference RF level in memory, so the software can compare the levels in the future to those set upon initial installation by the technician. To do this, it is first necessary to ascertain the IP address that has been assigned to the unit, and pull up its webpage. Using the IPSetup.exe utility on a computer attached to the same private network, find the ORR1000 unit by its MAC address, as recorded upon installation, and launch its webpage:



To set the RF reference level, simply change the "Detected RF Level" threshold to either 3dB or 6dB, and click on "Save Configuration". If you do not wish to receive SNMP traps at this time, simply change the threshold back to "Off", and again click on "Save Configuration". Either way the reference is set.

4. Thresholds - When turned ON, the Optical Receive Power will send a trap message if the optical input power to the ORR1000 drops below 0.50mw (-3.0dBm), or rises above 2.0mw (+3.0dBm). The detected RF Level threshold can be set for either a 3dB change, or a 6dB change in RF output level of the ORR1000 unit. You can also monitor the 24 VDC power supply to the ORR1000, with a choice of either 0.5 volt or 1.0 volt change thresholds.